

Continental Access

A Napco Security Group Company



CardAccess 3000 Database Server Installation V2.9.X

**Note: This document is to be used on a new
Database Server installation.**

REVISION – Rev A

DATE: 08/29/2012

CardAccess® 3000 



DISCLAIMER

Continental Instruments LLC makes no representations or warranties with respect to the contents hereof and specifically disclaim any implied warranties of merchantability or fitness for any particular purpose. Further, Continental Instruments LLC reserves the right to revise this publication and to make changes from time to time in the content hereof without obligation of Continental Instruments LLC to notify any person of such revision or changes.

Copyright © 2012 by Continental Instruments LLC. All rights reserved. No part of this publication may be reproduced, transmitted, transcribed, or stored in a retrieval system, without the prior written permission of Continental Instruments LLC, 355 Bayview Avenue, Amityville, NY 11701. Telephone: 631-842-9400 • FAX: 631-842-9135 • GSA# GS-07F-0039H.

This document contains proprietary information of NAPCO Security Technologies. Unauthorized reproduction of any portion of this manual without the written authorization of NAPCO Security Technologies is prohibited. The information in this manual is for informational purposes only. It is subject to change without notice. Companies, names and data used in examples herein are fictitious unless otherwise noted. NAPCO Security Technologies assumes no responsibility for incorrect information this manual may contain.

A NAPCO SECURITY TECHNOLOGIES COMPANY

Publicly traded on NASDAQ Symbol: NSSC

Visit our websites at

<http://www.cicaccess.com/>

<http://www.napcosecurity.com/>

<http://www.alarmlock.com/>

Table of Contents

Important Information - Must Read Prior To Starting Installation	4
Computer Specifications	6
Scope / CardAccess 3000 Database Server Installation.....	7
Automatic Database Creation	21
Readme.....	22
CardAccess Utility Settings	24
Appendix A	25

Important Information - Must be read before installing software.

- 1) This document pertains to a new CardAccess 3000 V2.9.X Database Server installation.
- 2) The purpose of a Database Server is to have a dedicated computer with SQL 2008 R2 and the CardAccess 3000 databases residing on it. The CardAccess 3000 Server (Host) points to the Database Server to access the databases.

Note: If the system also includes a CardAccess 3000 workstation, you will need a total of 3 computers (Refer to appendix A).

- 3) This procedure is to be used on a new V2.9.x Database Server installation. If this is an upgrade of a Database Server from V2.5.16 or earlier, you must uninstall CardAccess 3000, SQL 2000 and all other components. After all the components are removed, you will install the Database Server as a new install. VERY IMPORTANT: Verify all CardAccess.esx and CardAccess.esf files are removed from the computer prior to the installation.
- 4) It is highly recommended to use the full version of SQL 2008 R2 on a Database Server. The full version of SQL 2008 R2 should be installed prior to the Database Server installation. If the full version of SQL 2008 R2 is not detected during the installation, SQLEXPRESS 2008 R2 will be installed from the CardAccess 3000 CD.
- 5) The physical security key or the software license for CardAccess 3000 must be installed on the CardAccess 3000 Server (Host), not the Database Server. The Database Server does not require a license.
- 6) You must use a static IP address on a Database Server. Verify you obtain this IP address prior to installing the CardAccess 3000 Database Server software. Contact the network administrator if needed.
- 7) Verify the drive path used to install this Database Server is identical to the drive path used to install the CardAccess 3000 on the Server.

- 8) It is recommended to configure the CardAccess 3000 Database Server computer before configuring the CardAccess 3000 Server (Host) computer.

Reminder: As previously mentioned, you must configure the Database Utility settings on the CardAccess 3000 Server (Host) to point to the databases on the Database Server.

CA3000 v2.9.x Database Server PC Recommendations

	Server (1-4 Workstations)	Server (5-19 Workstations)	Server (20-49 Workstations)
Processor	Pentium Dual Core, 2.6GHz (min)	Xeon Quad Core 2.0GHz (min)	2 x Xeon Quad Core 2.0GHz (min)
Ram	2.0 GB Min/ 3GB+ for Win7 and Win Server 2008	4.0 GB Min	8 GB Min
Hard Drive	300 GB	500 GB	Raid 5 - 3 drives minimum
USB Ports	4 Min	4 Min	4 Min
Serial Ports	Optional - 1 expandable to 64	Optional - 1 expandable to 128	Optional - 1 expandable to 128
Parallel Ports	Optional - 1	Optional - 1	Optional - 1
Mouse	PS2 or USB	PS2 or USB	PS2 or USB
Monitor	17" SVGA (1024x768)	17" SVGA (1024x768)	17" SVGA (1024x768)
DVDROM	48x/16x	48x/16x	48x/16x
DVDR	24x/8x	24x/8x	24x/8x
Sound	Optional but Stand-Alone recommended	Optional	Optional
Network Card	100/1000 Mb NIC Ethernet	100/1000 Mb NIC Ethernet	100/1000 Mb NIC Ethernet
Operating System	Win XP Pro w/SP3, Win 7 Pro w/SP1 32/64 bit, Win 2003 Server R2 w/SP2 32/64 bit or Win 2008 Server R2 w/SP2	Win XP Pro w/SP3, Win 7 Pro w/SP1 32/64 bit, Win 2003 Server R2 w/SP2 32/64 bit or Win 2008 Server R2 w/SP2	Win XP Pro w/SP3, Win 7 Pro w/SP1 32/64 bit, Win 2003 Server R2 w/SP2 32/64 bit or Win 2008 Server R2 w/SP2
Database	MSSQL 2005/2008 R2 Express or MSSQL Server 2005/2008 R2 for higher performance	MSSQL Server 2005/2008 R2 recommended	MSSQL Server 2005/2008 R2 recommended
Backup	Tape / CD / DVD / Network	Tape / CD / DVD / Network	Tape / CD / DVD / Network

Note: It is recommended to use the full version of SQL 2008 R2 for a Database Server.

Scope

This document contains information regarding the installation of a CardAccess 3000 V2.9.x Database Server. A Database Server installation will install all the required files and utilities to create and maintain databases. Refer to Appendix A for a Database Server configuration diagram.

VERY IMPORTANT: The screenshots in this document were captured during a new CardAccess 3000 Database Server installation on a **Windows 7 – 64 bit computer**. The following screenshots will vary if the installation is being performed on a 32 bit computer or another supported operating system.

CardAccess 3000 Database Server Installation

If auto start is enabled on your system, the **Auto Play** screen will display after inserting the CardAccess 3000 DVD in the DVD drive (Refer to Figure 1). Click “**Run Launch.exe**”. Verify the **CardAccess 3000 Version 2.9 Setup** screen displays (refer to figure 3). Skip ahead to the steps following Figure 3.

Warning: If auto start is not enabled on your system, nothing will occur after inserting the CA3000 DVD. Follow the steps below to execute the program.

Click the **Start** menu on your PC. In the **Search Programs and Files** box or Start/Run box, type **d:\launch.exe** (Refer to Figure 2). After pressing ENTER, the **CardAccess 3000 Version 2.9 setup** screen will display (Refer to Figure 3).

Note: “d:” represents the DVD drive letter. This letter will be different depending on the drive letter of your DVD.



Figure 1.



Figure 2.



Figure3.

Click on the **Install CardAccess 3000** button. The CardAccess 3000 Prerequisites will be installed if they are not currently on the computer.

Pre-requisites

NOTES:

- There can be up to seven prerequisites required to be installed. Older supported operating systems will require more prerequisites to be installed (refer to figure 4).
- During the installation of the prerequisites, the computer might require a reboot. If you are prompted to reboot, click Yes or OK (refer to figure 6). After the computer reboots, the CardAccess 3000 setup program might need to be restarted manually (refer to figures 1, 2 and 3).

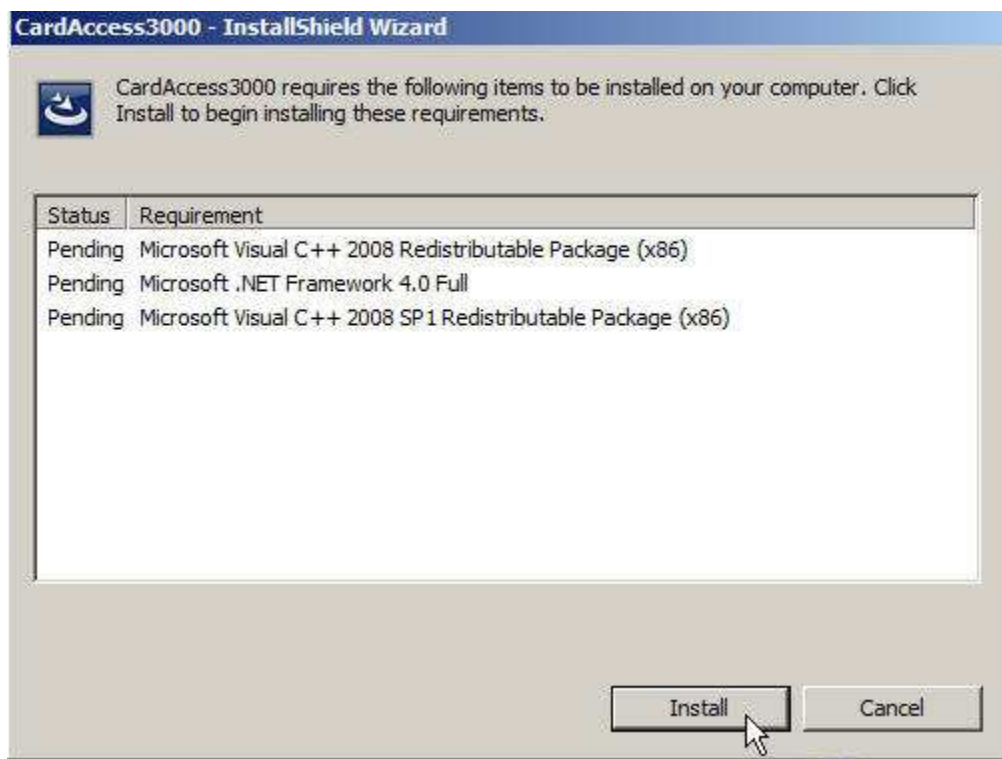


Figure 4.

Click **Install**. After clicking **Install**, a progress bar will display while the prerequisites are installing (refer to figure 5).

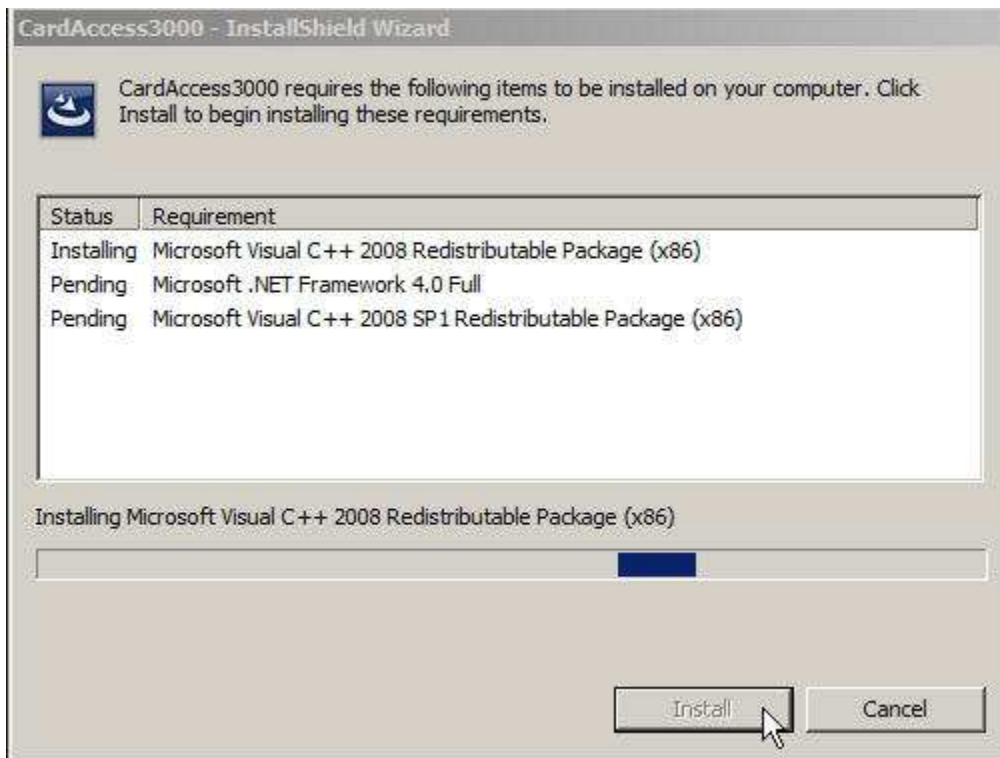


Figure 5.

Reminder: During the installation of the prerequisites, the computer might require a reboot. If you are prompted for a restart, click **OK** (refer to figure 6),

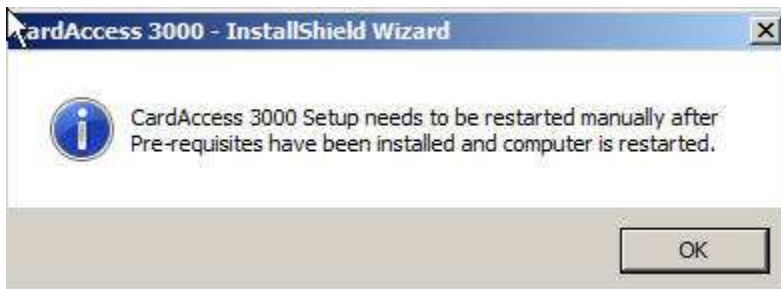


Figure 6.

Click **OK**. After completion of the prerequisites, the **Visual C++ Runtime Libraries** and the **ADH Source Filter for DirectShow** installation will begin (Refer to figure 7).

Reminder: If the Visual C++ Runtime Libraries or the ADH Source Filter for DirectShow is already installed on the computer, this process will be skipped. .



Figure 7.

Note: As part of the **ADH Source Filter for DirectShow** installation, the Visual C++ Run Time libraries will be installed if needed (refer to figure 8).

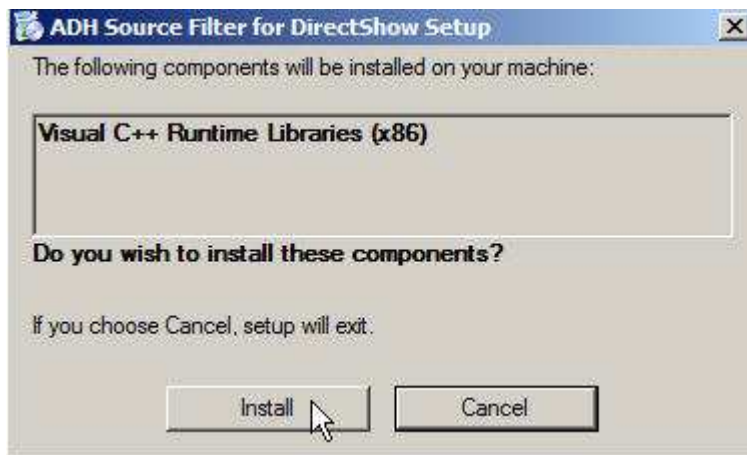


Figure 8.

Click **Install**. The Visual C++ 2005 Redistributable files will install (Refer to figure 9).



Figure 9.

After the completion of the Visual C++ libraries, the **ADH Source Filter for DirectShow Setup Wizard** will install (Refer to figure 10).



Figure 10.

Click **Next**. The **ADH Source Filter for DirectShow Installation Folder** screen will display (Refer to figure 11).



Figure 11.

Click **Next**. The **ADH Source Filter for DirectShow Confirm Installation** screen will display (Refer to figure 12).



Figure 12.
Click **Next**. A progress bar will display while the ADH Source Filter for DirectShow installs (Refer to figure 13).



Figure 13.
An **Installation Complete** screen will display when the ADH Source Filter for DirectShow installation is complete (Refer to figure 14).

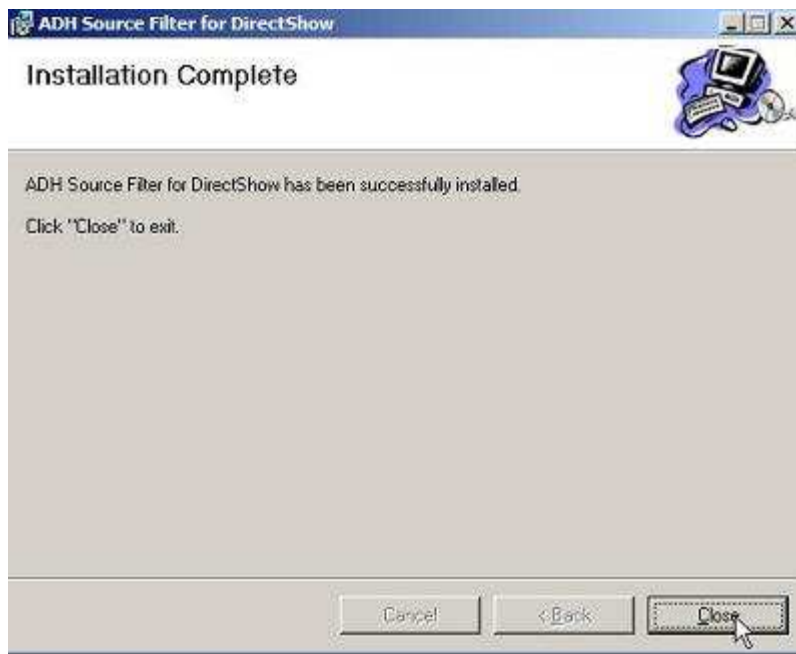


Figure 14.
Click **Close**. The **Welcome to the CardAccess 3000 Setup** screen will display (Refer to figure 15).

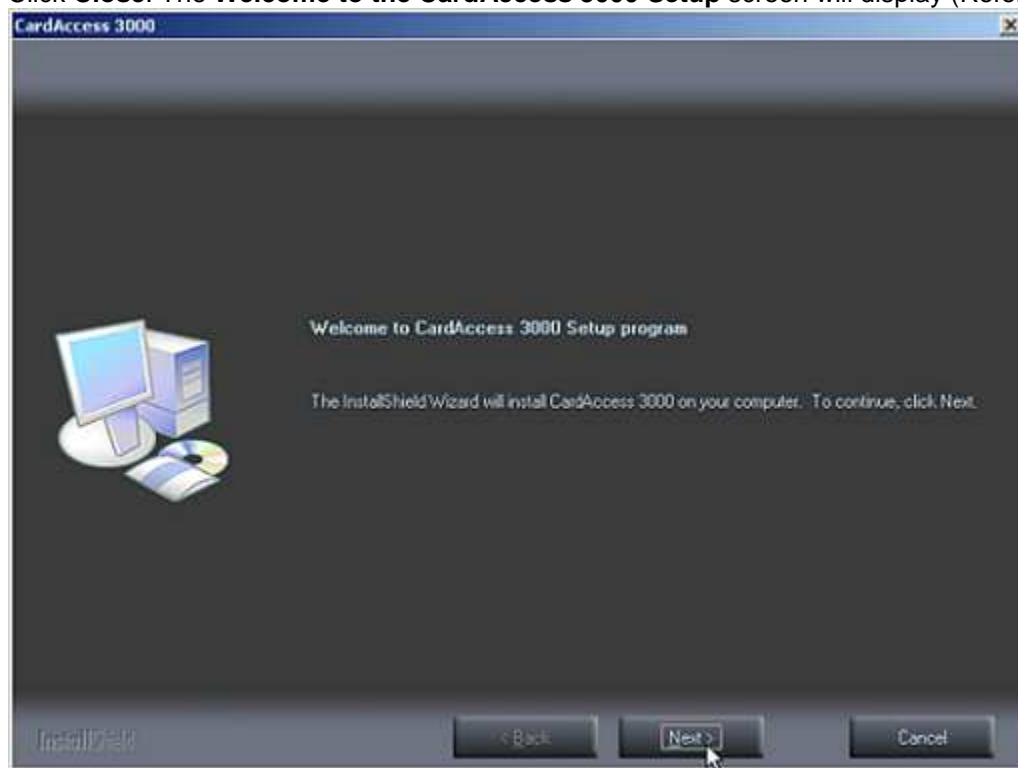


Figure 15.
Click **Next**. The Select CardAccess Install Type screen will be displayed (Refer to figure 16).

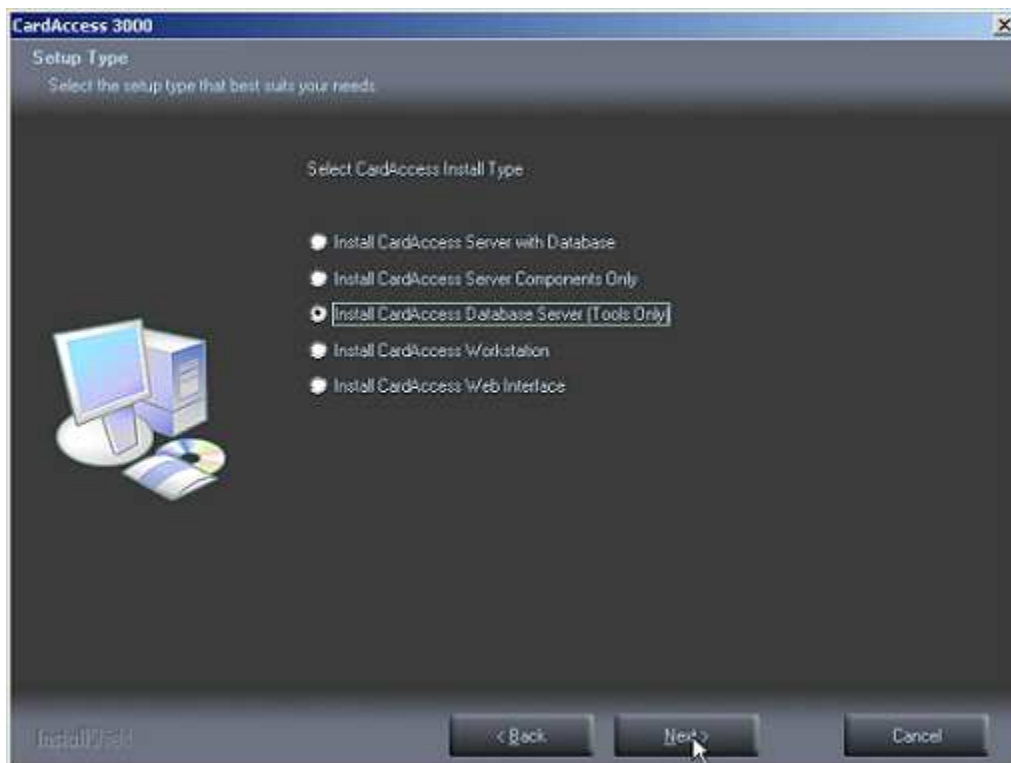


Figure 16.

Click **Next**. You will be prompted with a Question box displaying **Selecting this option will install only CardAccess Database Utilities for creating databases. Are you sure you want to install Database Server?** (Refer to figure 17).



Figure 17.

Click **Yes**. You will be prompted with an Information box displaying **Please ensure that the drive path used to install this Database Server is identical to the drive path used to install CardAccess on the Host machine** (Refer to figure 18).



Figure 18.

Click **OK**. The select CardAccess Destination Folder screen will display (Refer to figure 19).

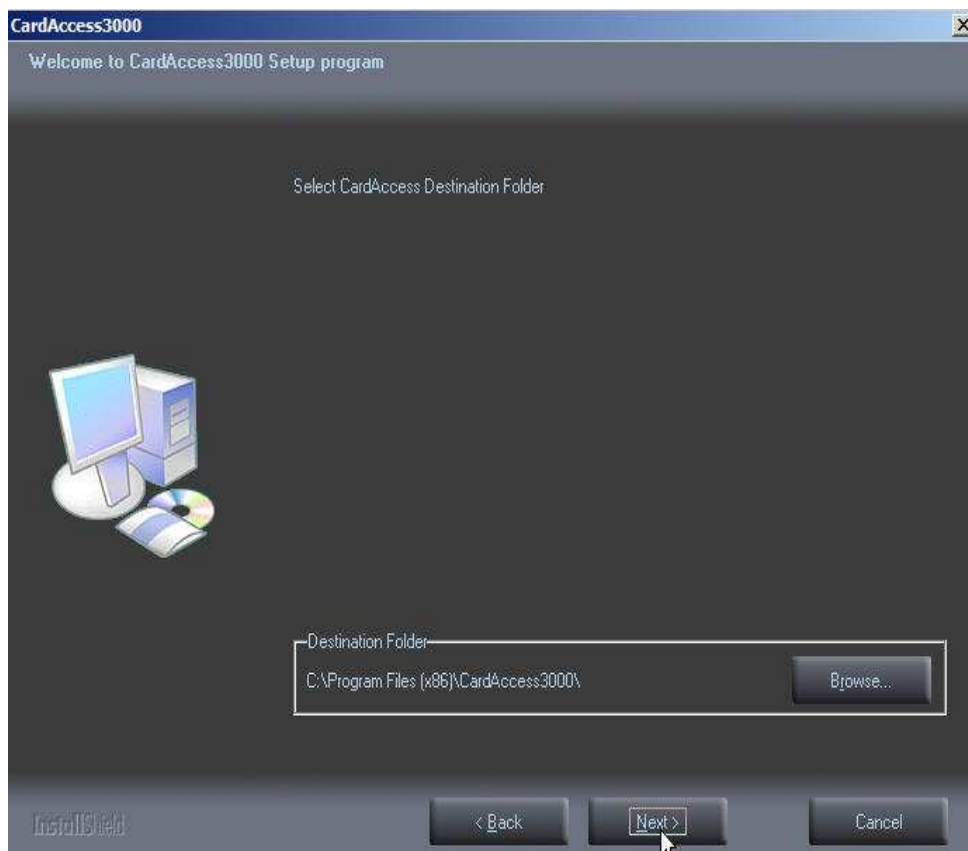


Figure 19.

Click **Next**. The Current Settings screen will display (Refer to figure 20).

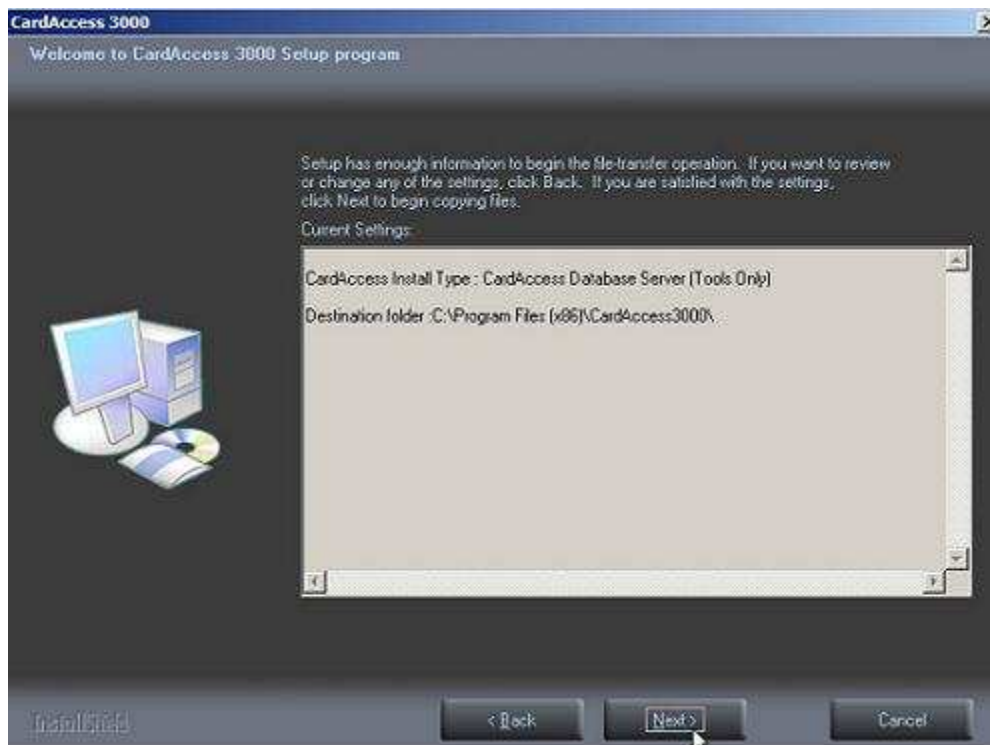


Figure 20.
Click **Next**. A progress bar will display while the CardAccess 3000 software is displaying (Refer to figure 21).

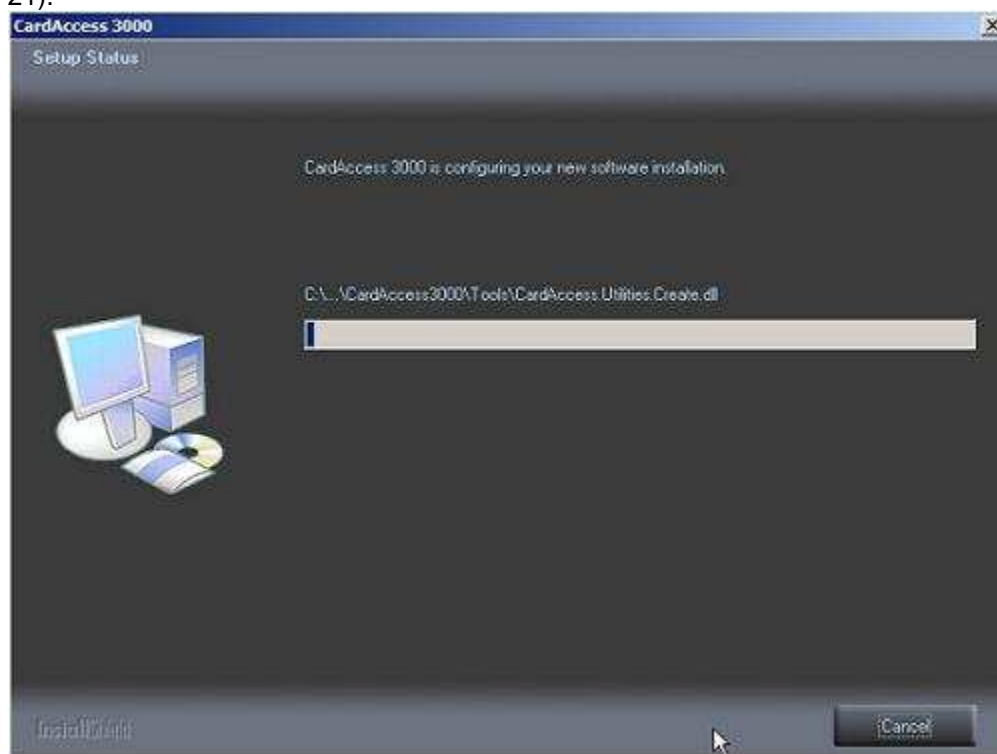


Figure 21.

VERY IMPORTANT: As previously noted, it is highly recommended to have the full version of SQL 2008 R2 pre-installed. The installation will check for a previously installed version of SQL. If a version of SQL is not detected, this installation will install SQL 2008 R2 Express.

If a version of SQL 2008 R2 is detected, the installation process will skip to the “**AUTOMATIC DATABASE CREATION**” (Refer to figure 25).

Note: If you are using a shared drive to install CA3000 and SQL, you must have it mapped to a drive letter.

SQL Express 2008 R2 Installation

Note: It is recommended to use the Full version of SQL 2008 R2 on a Database Server. For this example, the SQL Express 2008 R2 will install from the DVD.

The SQL Express 2008 R2 installation will start automatically. The **Microsoft SQL Server 2008 Setup** screens will display (Refer to Figure 21, 22, 23 and 24).

Note: Depending on the operating system, a few other screens might display momentarily during the installation of SQL 2008 Express R2 installation.



Figure 21.



Figure 22.

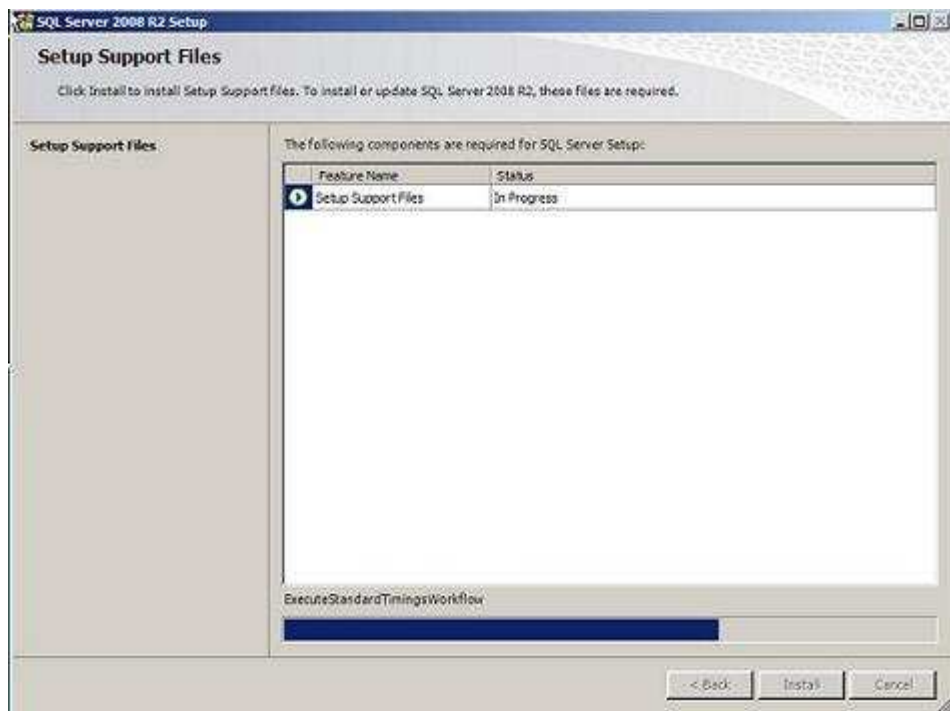


Figure 23.

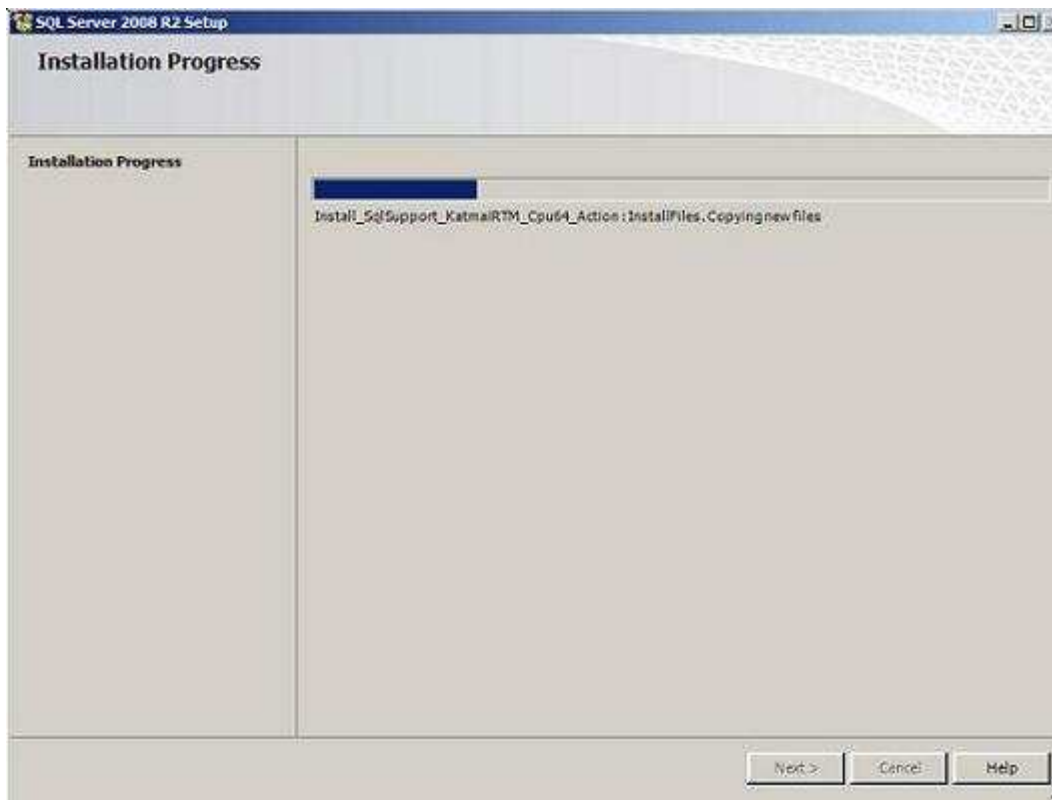


Figure 24.

At the completion of the SQL Express 2008 installation, the Automatic Database Creation screen will display (Refer to Figure 25).

Automatic Database Creation

Note: Previous to the **Automatic Database creation tool** screen, a database setup/update screen will momentarily display.

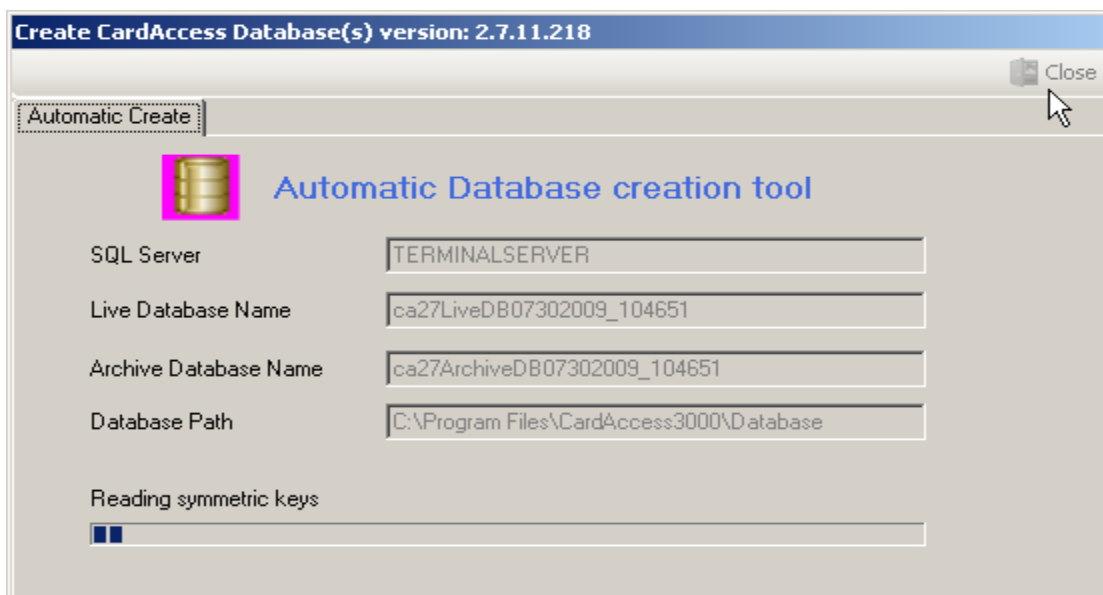


Figure 25.

NOTE: The database names will reference V2.9. The above screenshot is from a V2.8 installation.

This process will take a few minutes. A live and archive database will be created automatically. At the completion of the Automatic Database Creation, the Readme Information screen will display (Refer to figure 26).

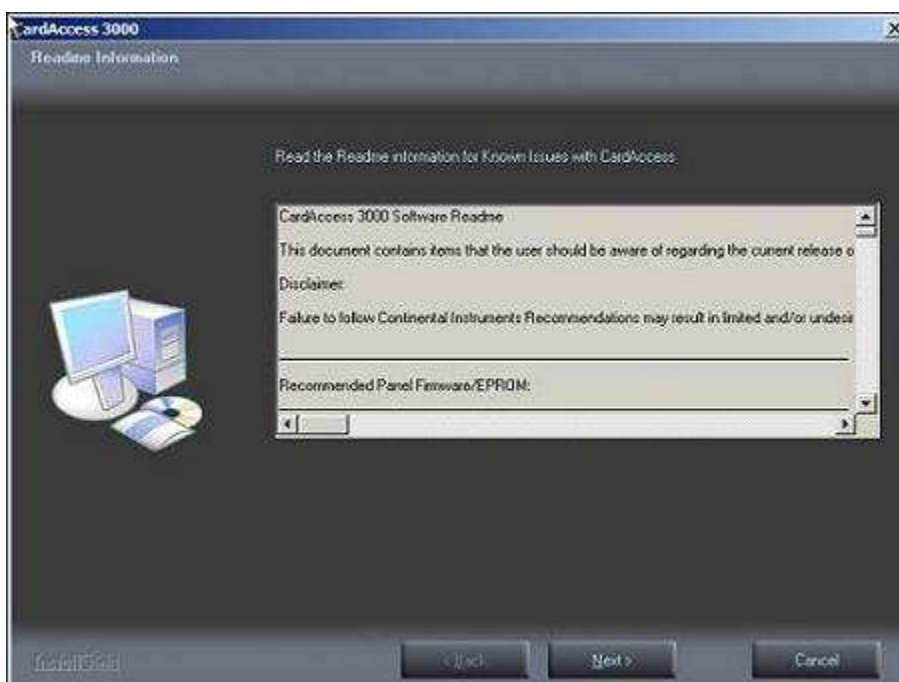


Figure 26.

After reviewing the CardAccess 3000 Software Readme notes, click **Next**. The **InstallShield Wizard Complete** screen will display (Refer to figure 27).

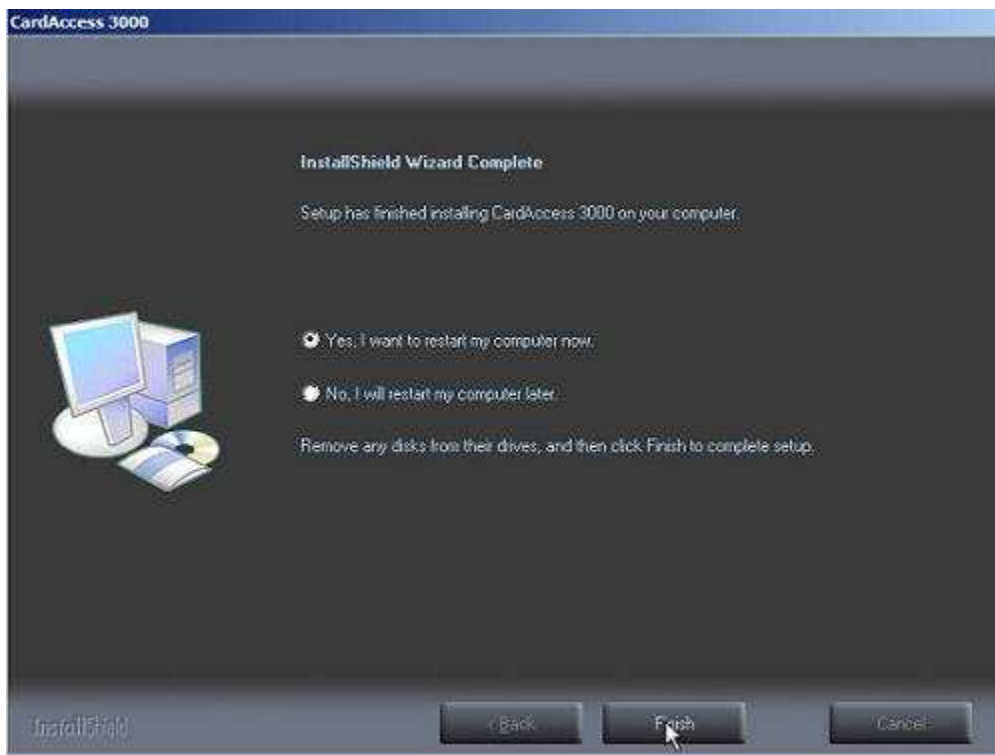


Figure 27.

Verify the **Yes, I want to restart my computer now** option is selected. This should be selected by default. Click **Finish**. The computer will restart.

The CardAccess 3000 Database Server installation is now complete. If the Database Server installation completed successfully, two databases should have been created on it (Livedatabase and Archivedatabase).

CardAccess Utility Settings

CARDACCESS UTILITIES ON THE CARDACCESS 3000 DATABASE SERVER

Do not configure the CardAccess Utilities (Database utility) on the Database Server.

CARDACCESS UTILITIES ON THE CARDACCESS 3000 HOST

SQL Server = Name of the SQL server on the **Database Server**.

SQL Database = Name of the live database on the **Database Server**.

CICDataserver Host = IP address of the CA3000 Server (Host) or the loopback address (127.0.0.1.) **VERY IMPORTANT:** Verify this address is **NOT** pointing to the Database Server IP address.

CICDataserver Port = 9000.

Network Station ID = Host PC

CARDACCESS UTILITIES ON THE CARDACCESS 3000 WORKSTATION

SQL Server = Grayed Out

SQL Database = Grayed Out

CICDataserver Host = IP address of the CA3000 Server (Host). Verify this address is **NOT** pointing to the Database Server IP address.

CICDataserver Port = 9000.

Network Station ID = Workstation 1

APPENDIX A

CA3000 Host, Workstation and Database Server configuration

